

The logo features the word "TIMOTEC" in a white, sans-serif font. The letter "O" is replaced by a light blue circle with a small gap at the bottom. The text is centered within a dark gray square. This square is framed by a light blue border that forms an open square shape, with the corners of the frame extending slightly beyond the edges of the dark gray square.

TIMOTEC



## TIMOTEC GROUP

We are a provider of customized solutions in the fields of isolator technologies, laminar flow systems, automation, robotics, cleanrooms, and their equipment. Our main focus lies particularly in the areas of pharmaceuticals, science and research, the optoelectronics industry, the semiconductor industry, and healthcare.

We have been active in the market since 1999. By combining the professional expertise and technological solutions of the companies belonging to the TIMOTEC Group, we offer comprehensive, tailor-made solutions including fast service. Thanks to our strong know-how, in-house development and manufacturing, and a broad service portfolio, we deliver individual solutions to our customers.

A long, brightly lit corridor with stainless steel walls and doors. The floor is a light, neutral color. The ceiling has recessed lighting and circular ventilation grilles. The walls are made of vertical stainless steel panels. On the left, there are several doors with vertical glass inserts. On the right, there are glass partitions and a door. The corridor leads to a bright light at the far end.

# CONTENTS

**04**

**TECHNOLOGIES - SERVICES**  
CERTIFICATION

**05**

**MATERIAL SPECIFICATIONS**

**06**

**WORK TABLES**  
PERFORATED TABLES FOR LF  
SET-UP TABLE

**08**

**WASHING FACILITIES**  
PANELLED WASH TABLES  
SINKS  
COMBINED SINKS  
WASHING TROUGH  
WASH TABLES ON METAL BASE

**11**

**PERSONNEL AIRLOCKS**  
HIGH CABINETS  
STEP-OVER BENCHES  
DEEP BENCHES  
BENCHES  
HANGERS  
COVER PANELS  
PLINTH FINISHING

**15**

**STORAGE SOLUTIONS**  
SHELVING  
WALL-MOUNTED SHELVES  
SHELF BETWEEN PARTITIONS  
SINK CABINET  
SHELF BETWEEN PARTITIONS

**17**

**HANDLING TROLLEYS**  
MOBILE TABLES  
TRANSPORT TROLLEYS

**19**

**ISO MODULAR CABINETS**

# TECHNOLOGIES AND SERVICES

- Development and design
- Metal fabrication
- Stainless steel fabrication
- Assembly and implementation
- Electrical installations
- Welding
- Surface treatment of steel elements - powder coating

## CERTIFICATION

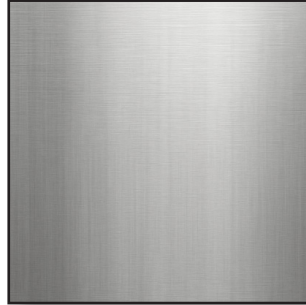
- ISO 9001:2015 - Quality Management System
- ISO 45001:2018 - Occupational Health and Safety Management System
- ISO 14001:2015 - Environmental Management System
- STN EN 1090-2:2019, class EXC3 - Welding Certificate
- STN EN ISO 9001:2016 and STN EN ISO 3834-2:2006 - Welding Certificate



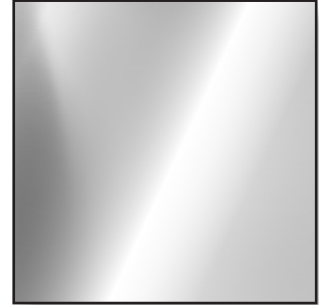
# MATERIAL SPECIFICATIONS



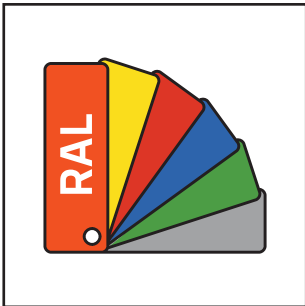
**AISI 304 SB**  
Chrome-Nickel Austenitic  
Steel



**AISI 316 SB**  
Acid-Resistant  
Chrome-Nickel-  
Molybdenum Steel



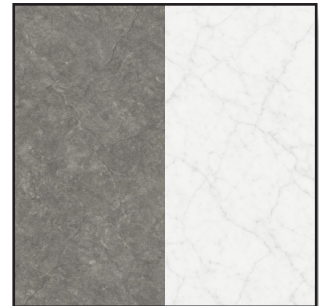
**AISI 304 BA | AISI 316 BA**  
Bright Annealed Finish



**RAL**  
Color Finish



**HPL**  
High-Pressure Laminate



**ARTIFICIAL STONE**  
Option For Worktops  
(White/Gray)



GMP  
COMPLIANCE



LOAD  
CAPACITY



WATER  
TAP



ADJUSTABLE  
FEET



DATA  
SOCKET



GROUNDING



ELEKTRICAL  
SOCKET





## WORK TABLES



## WORK TABLES 215.01

Work tables made of AISI 304/316 stainless steel with smooth, perforated, or pressed worktops. Suitable for cleanrooms and for handling chemicals. Features include adjustable feet and grounding. Available in various dimensions.

SURFACE FINISHES:

AISI  
304

AISI  
316

ART.  
STONE



DATA SHEET



## PERFORATED TABLES FOR LF 215.02

Perforated tables made of AISI 304/316 stainless steel, designed for use in cleanrooms with laminar airflow. The worktop has a perforation of at least 30% to ensure optimal airflow. The load capacity of the tables is 100 kg.

SURFACE FINISHES:

AISI  
304

AISI  
316



DATA SHEET



## SET-UP TABLES 215.12

Stainless steel set-up table (AISI 304) with a three-drawer cabinet and a two-shelf gallery. Can be customized with electrical/data sockets and an adjustable monitor arm. Ideal for central sterilization departments.

SURFACE FINISHES:

AISI  
304

AISI  
316



DATA SHEET







## WASHING FACILITIES

## PANELLED WASH TABLES 215.03



Panelled stainless steel wash tables certified for laboratories and healthcare facilities. Made of AISI 304/316, available with a flat or pressed surface, with customizable dimensions and sink placement. Available with various types of faucets and siphons.

SURFACE FINISHES:

AISI  
304

AISI  
316



DATA SHEET



## SINKS 215.04



SURFACE FINISHES:

AISI  
304



DATA SHEET



## COMBINED SINKS 215.04/B



SURFACE FINISHES:

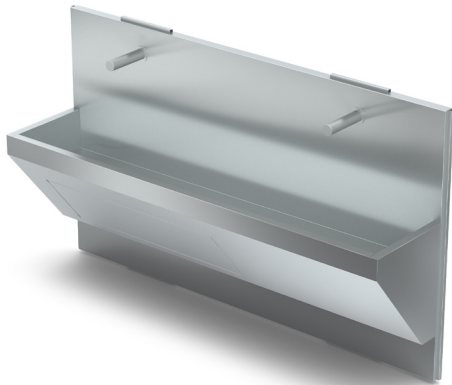
AISI  
304

AISI  
316



DATA SHEET





## SURGICAL SCRUB SINKS 215.05

AISI 304 washing trough designed for cleanrooms, primarily for pre-operative areas. Equipped with sensor-operated faucets and service doors. Mounted on a base profile and anchored to the partition.

SURFACE FINISHES:

AISI  
304



DATA SHEET



## WASH TABLES ON METAL BASE 215.09

Robust stainless steel wash tables on a metal base. Made of AISI 304/316, with a choice of the number and placement of sinks. Characterized by long durability and easy maintenance.

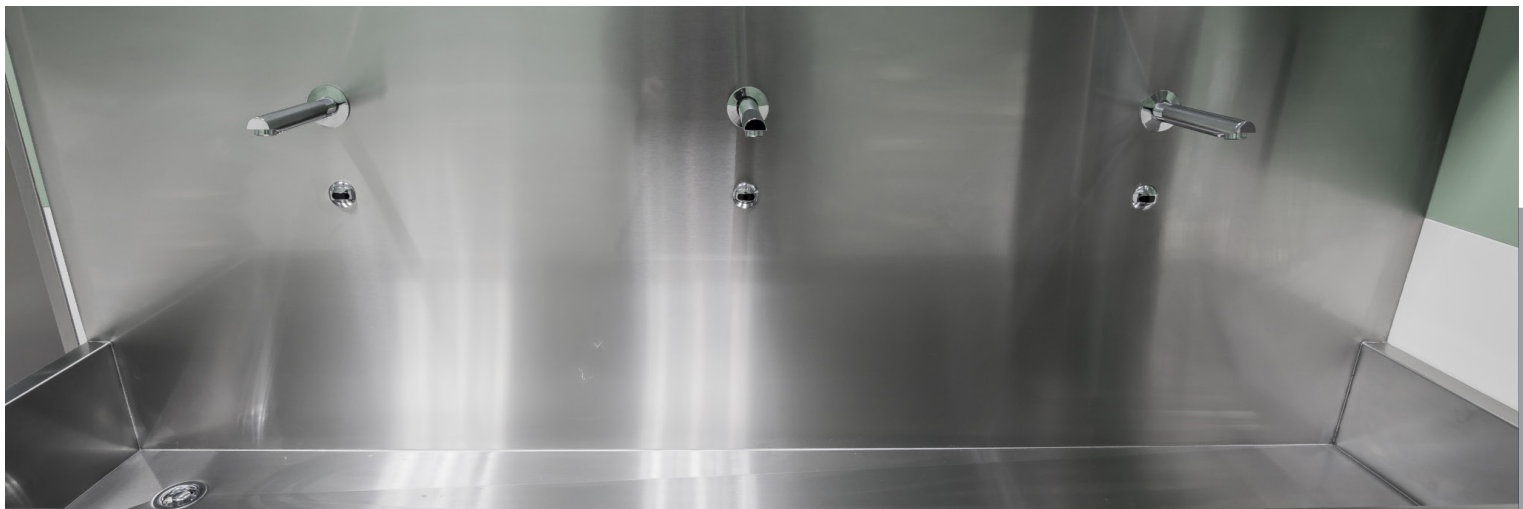
SURFACE FINISHES:

AISI  
304

AISI  
316



DATA SHEET



A photograph of a personnel airlock room. The room features white cabinetry with silver handles, a white speckled countertop, and a white speckled floor. A large white door is visible on the left side of the room. The text "PERSONNEL AIRLOCKS" is overlaid in the center of the image.

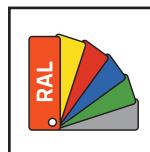
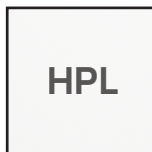
# PERSONNEL AIRLOCKS



## HIGH CABINETS 216.01

Cabinets for storing garments, footwear, and cleaning supplies in personnel airlocks. Option for exhaust ventilation and cover panels.

SURFACE FINISHES:



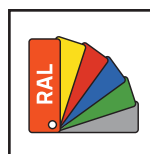
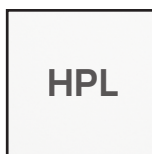
DATA SHEET



## STEP-OVER BENCHES 216.20

Step-over bench made of AISI 304 stainless steel, suitable for cleanrooms. Used for footwear storage. It creates a demarcation line of cleanliness in the airlock area.

SURFACE FINISHES:



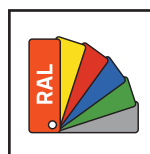
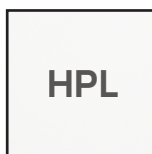
DATA SHEET



## DEEP BENCHES 216.20

Deep bench made of AISI 304 stainless steel, suitable for cleanrooms. Equipped with removable shelves for footwear and a plinth.

SURFACE FINISHES:

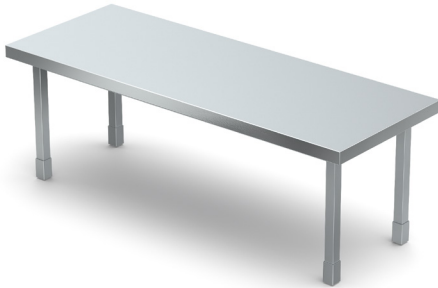


DATA SHEET





## BENCHES 216.21



SURFACE FINISHES:

AISI  
304

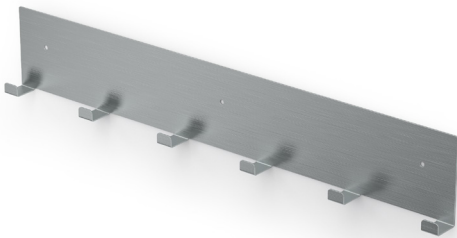
HPL



DATA SHEET



## HANGERS 216.30



SURFACE FINISHES:

AISI  
304

DATA SHEET



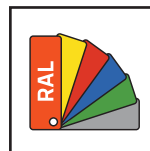
## COVER PANELS 216.31



SURFACE FINISHES:

AISI  
304

HPL



DATA SHEET



## PLINTH FINISHING WITH 50 MM BASE PROFILE 216.40



Plinth finishing for cabinets in personnel and material airlocks. An aesthetic and practical solution.

SURFACE FINISHES:

AISI  
304

HPL

DATA SHEET





# **STORAGE SOLUTIONS**



## SHELVING 215.06

Stainless steel shelving for GMP and cleanroom environments. Made of AISI 304/316, with smooth or perforated shelves with a load capacity of up to 90 kg. The shelves are conductively connected and are supplied with adjustable feet. Option for anchoring or stabilization with a cross-brace.

SURFACE FINISHES:

AISI  
304

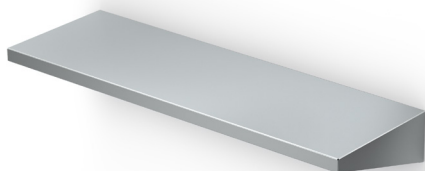
AISI  
316



DATA SHEET



## WALL-MOUNTED SHELVES 215.08



SURFACE FINISHES:

AISI  
304

AISI  
316



DATA SHEET





# HANDLING TROLLEYS





## MOBILE TABLES WITH ONE SHELF 215.07

Mobile stainless steel tables (AISI 304/316) with optional shelves and castors. Load capacity 100 kg. Ideal for cleanrooms.

SURFACE FINISHES:

AISI  
304

AISI  
316



DATA SHEET



## MOBILE TABLES WITH TWO SHELVES 215.07

Mobile stainless steel tables (AISI 304/316) with optional shelves and castors. Load capacity 100 kg. Ideal for cleanrooms.

SURFACE FINISHES:

AISI  
304

AISI  
316

DATA SHEET



## TRANSPORT TROLLEY 215.14

Transport trolleys made of AISI 304/316 stainless steel for use in GMP environments. We offer trolleys with a load capacity of 200kg, with smooth shelves and swivel castors. Various dimensions available..

SURFACE FINISHES:

AISI  
304

AISI  
316



DATA SHEET



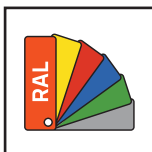
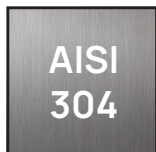


## ISO MODULAR CABINETS

## ISO MODULAR CABINETS 214.05

Practical ISO modular cabinets for efficient organization in healthcare. Construction from AISI 304 stainless steel, with internal ABS guides. Various widths (500-1500 mm), height 2050 mm, depth 655 mm. Choice of solid or glass doors, and RAL color finishes.

### SURFACE FINISHES:



### DATA SHEET











# TIMOTEC



[www.timotec.eu](http://www.timotec.eu)  
tel.: +421 33 79 89 111  
e-mail: [info-sk@timotec.eu](mailto:info-sk@timotec.eu)

Vrbovská cesta 39  
921 01 Piešťany  
Slovenská republika